

SMART MEGA EVENTS

Prof. Dr.-Ing. Ina Schieferdecker
SXSW, Austin, Texas
March 14, 2016

A world map with a dark blue background, where the landmasses are outlined in a lighter blue. The map is covered with numerous small, bright yellow and white dots representing city lights at night. These lights are most concentrated in North America, Europe, and East Asia, with a sparser distribution in Africa and South America. The overall effect is a global view of urban density.

CHALLENGES AND CHANCES IN URBAN AREAS

»If the nineteenth century was the century of empires and the twentieth century the century of nation states, then the **twenty-first century will be the century of cities.**«

Denver Mayor Wellington E. Webb

Opening the first Transatlantic Summit of Mayors in Lyon, France, April 6-8, 2000.

CHALLENGES AND CHANCES IN URBAN AREAS

In 2050, 6.3 billion people will live in urban areas, double as many as of today

Cities **consume** ...

... **75%** global natural resources

... **80%** global energy and **produce** ...


... **75%** global CO2 emissions.

VIEWS ON SMART CITIES



Metropolis
Fritz Lang, 1926

VIEWS ON SMART CITIES

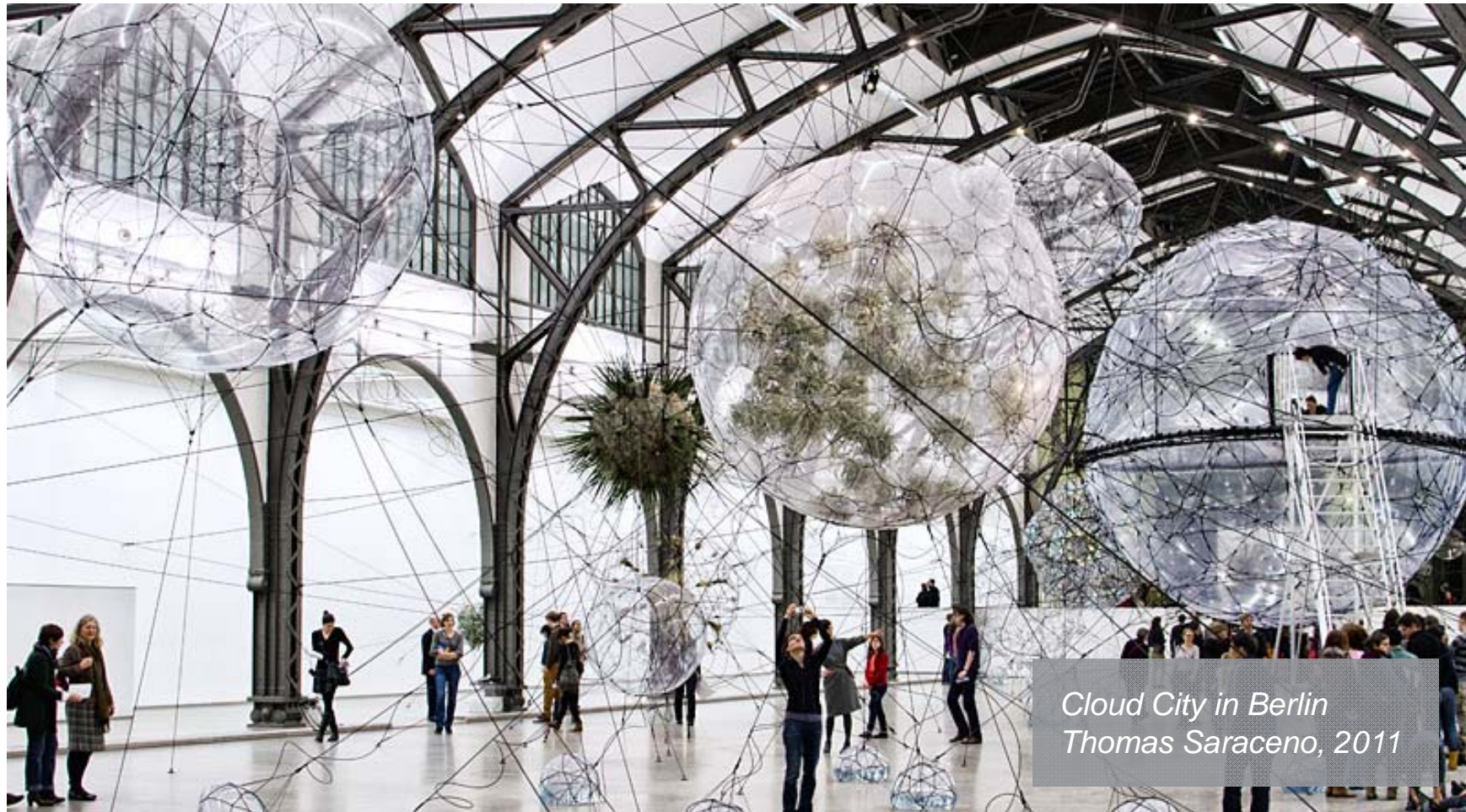


»Through the eyes of a high-flying night bird, we take in the scene from midair. In our broad sweep, the city looks like a single gigantic creature – or more like a single collective entity created by many intertwining organisms. Countless arteries stretch to the ends of its elusive body, circulating a continuous supply of fresh blood cells, **sending out new data and collecting the old**, sending out new consumables and collecting the old, sending out new contradictions and collecting the old.«

Haruki Murakami "After Dark", London 2007

Roofer
Vadim Makhorov, 2013

VIEWS ON SMART CITIES



*Cloud City in Berlin
Thomas Saraceno, 2011*

SMART CITY – APPR. 200 DEFINITIONS, BUT ICT IS CENTRAL

Study Mapping Smart Cities in the EU,

DG Internal Policies 2014:

A city seeking to address public issues **via ICT based solutions** on the basis of a multi-stakeholder, municipality-based partnership.



BERLIN – THE DIGITAL CAPITAL OF GERMANY AND EUROPE

Berlin is

- top entrepreneurial city
- top investors city
- top booming city

UdK

TU Berlin

HU Berlin

FU Berlin

Charité

Adva Optical
Networking

Coriant R&D
GmbH

Cisco
Systems
GmbH

Daimler AG

Philips
Deutschland
GmbH

Robert Bosch
GmbH

Deutsche
Telekom AG

First Sensor
AG

KMUs, GUs,
Startups

SAP SE

Schneider
Electric SA

IBM
Deutschland
GmbH

Microsoft
Deutschland GmbH

Siemens AG

Stromnetz
Berlin GmbH

TomTom
Development
Germany GmbH

VDI/ VDE

BITKOM

SIBB

ASQF

BERLIN – THE DIGITAL CAPITAL OF GERMANY AND EUROPE

**ICT for
Smart Cities
Portal**
Fraunhofer
FOKUS

**Smart City
Conference in
Berlin**
Münchner
Kreis

**Smart City
High Techs**
acatech

**Smart City
Network
Berlin**
Berlin Partner
et al

**Berlin City
Insight
Report**
Fraunhofer
Morgenstadt

**Smart City
Platform**
TU Berlin

**Charta
Smart City
Berlin**
Berlin Partner
et al

**Smart City
Summit Berlin**
SenWTF et al

**Smart City
Berlin Study**
TSB

**Smart City
Strategy Berlin**
SenStadtUm et al

City of the Future
acatech

**Science Year on
Future Cities**
BMBF et al

**10 Points in
Digital Agenda**
Berliner Kreis zur
Digitalisierung

2010

2014

2016

DATA! DATA! DATA!

URBAN PLATFORMS TAKE FORM

New Forms of Organization
Example:



FOKUS represents Berlin in the project „Commons 4 Europe“



Mediator between needs of the public sector and committed app developers

Applications
Examples:



The mobile disaster warning system for citizens



Efficient reporting and management of citizen issues

Platforms
Examples:



The Cloud-based marketplace for public AND commercial service offers



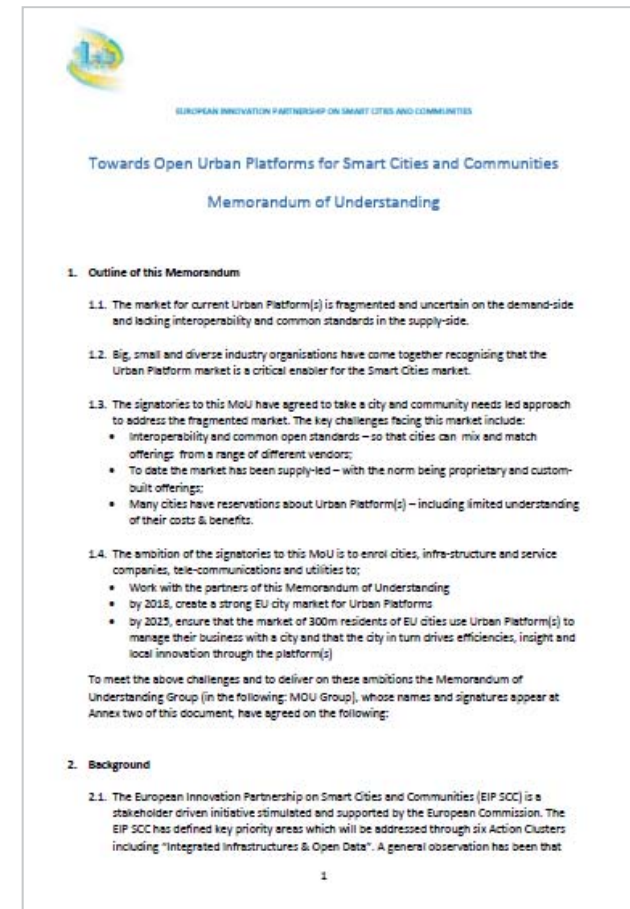
The Berlin Open Data platform

City administration to develop into platform providers !

EUROPEAN INNOVATION PARTNERSHIP ON SMART CITIES AND COMMUNITIES

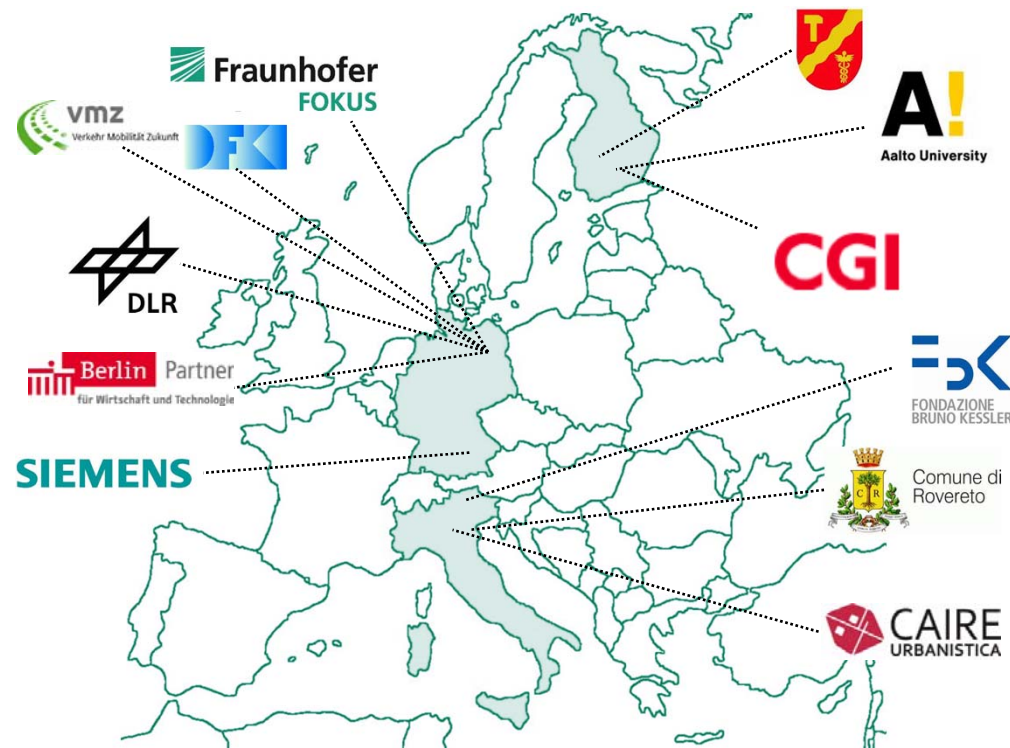
Memorandum of Understanding “Towards Open Urban Platforms for Smart Cities and Communities”

- by 2018, create a strong EU city market for Urban Platforms
- by 2025, ensure that the market of 300m residents of EU cities use Urban Platform(s) to manage their business with a city and
- that the city in turn drives efficiencies, insight and local innovation through the platform(s)



EC EIP on Smart Cities and Communities, Mai 2015

STREETLIFE – AN EU FP7 R&D PROJECT



Call

ICT for a Low Carbon Economy

Objective

ICT-2013 6.6 –
Integrated personal mobility for smart cities

Coordinator

Fraunhofer FOKUS

Duration

10.2013 – 09.2016

12 Partner (Transport and ICT)

3 Pilot cities

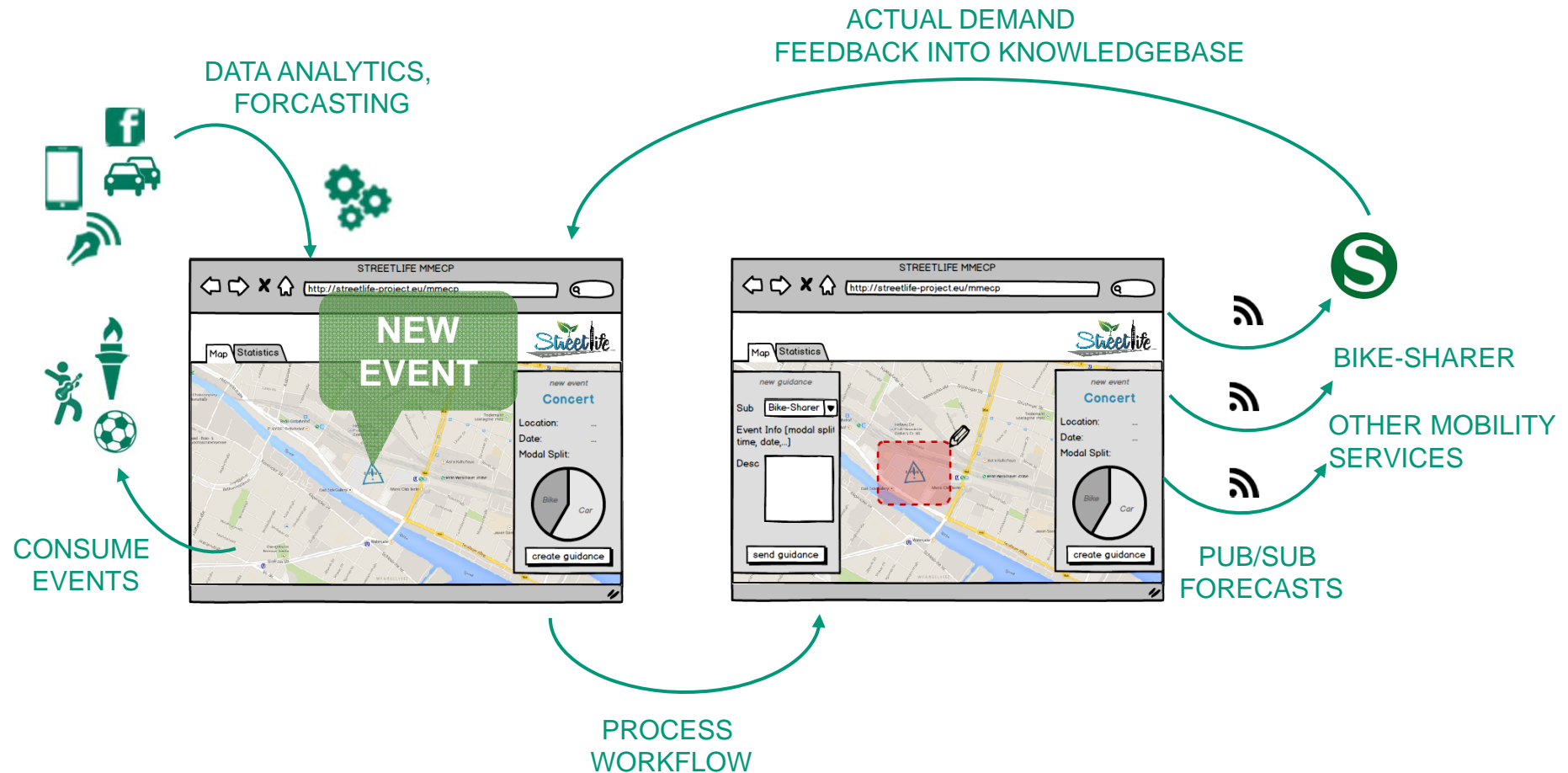
Berlin, Rovereto, Tampere

Budget

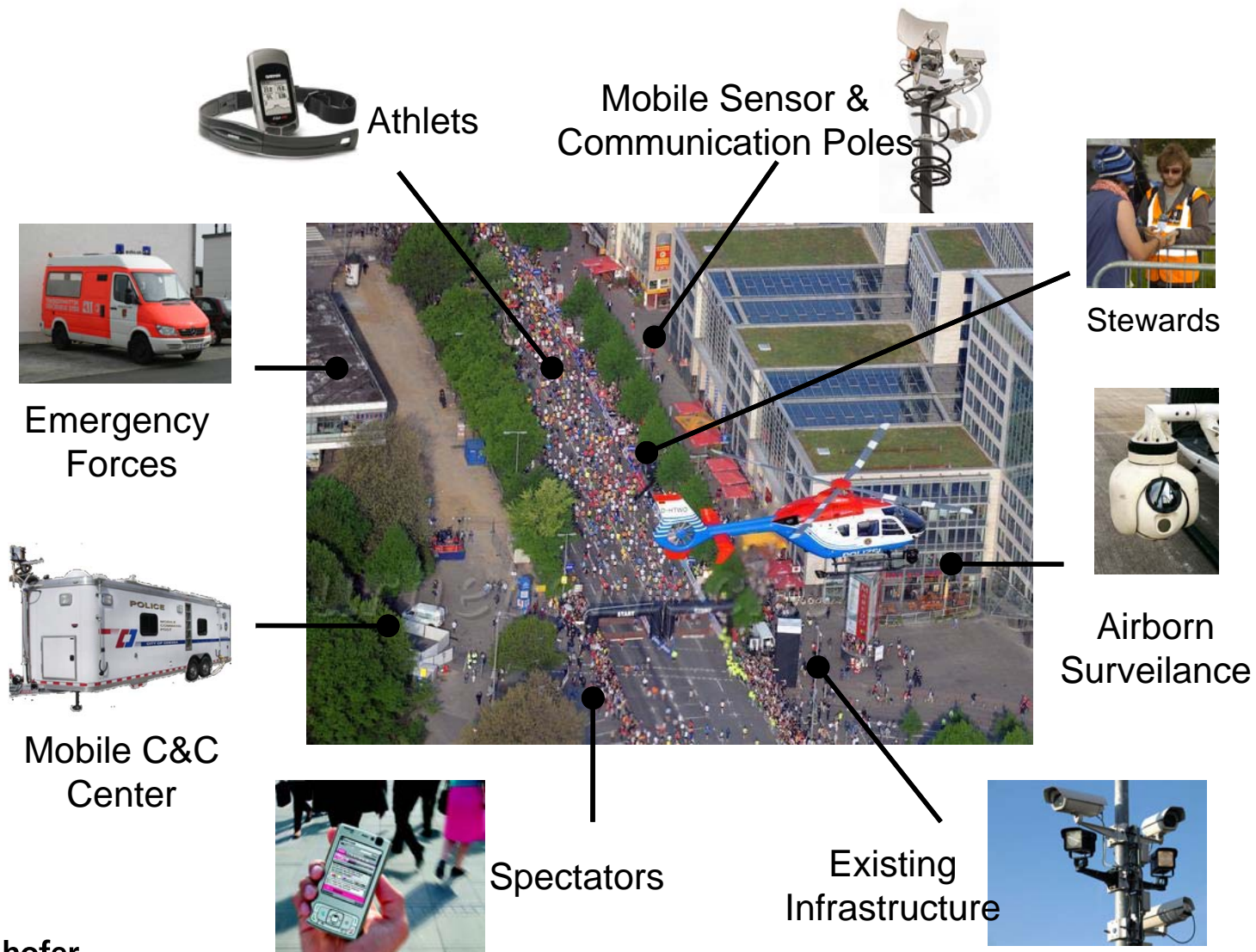
6,1 Million Euro

ONE SCENARIO

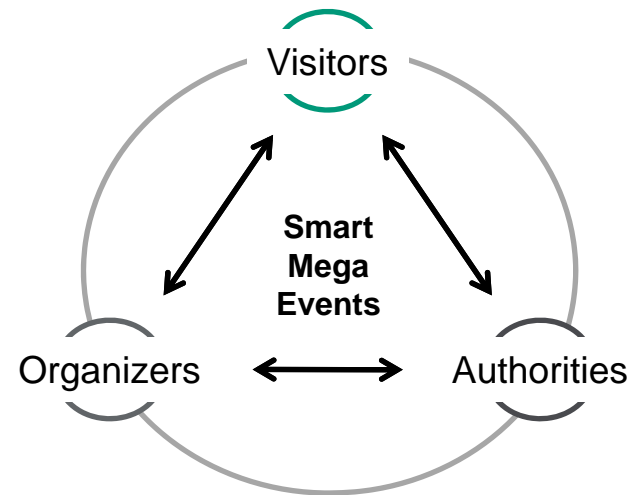
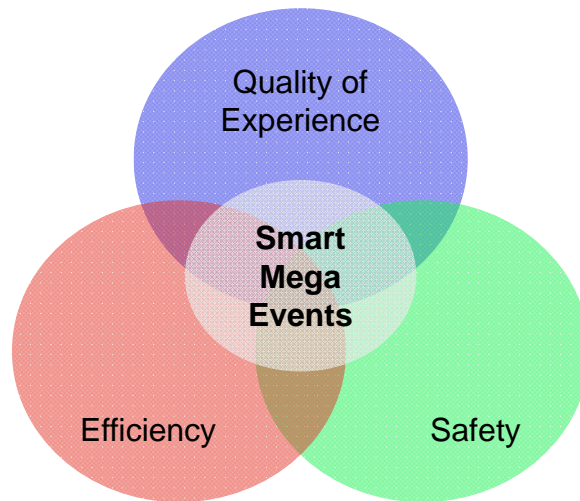
SERVICE ADJUSTMENT BASED ON GROWING DEMAND



SMART MEGA EVENTS



INDUSTRIAL STUDY UNDER NDA



URBAN ICT AS CRITICAL INFRASTRUCTURE

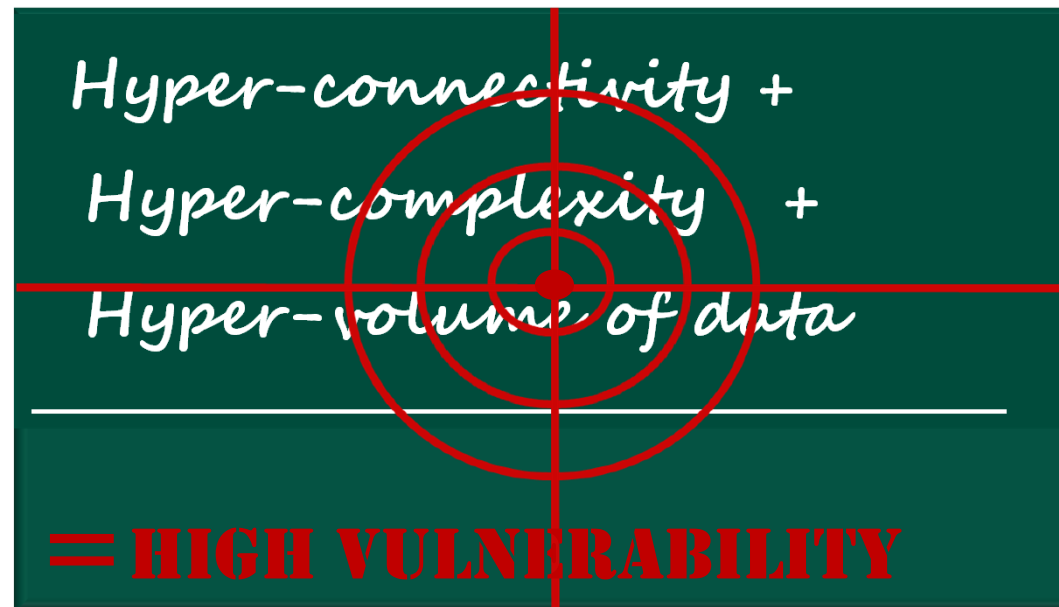
Smart cities imply ...

- High complexity of the ICT systems
- Highly interconnected components
- High volume of data generated

... and need to be designed with...

- Cyber security
- Privacy
- Integrity
- Compliance
- Reliability
- Resilience

...in mind.



Become a member.

Try for free



is the network of excellence for the software development industry in German-speaking European countries.

1.400 globally active companies, specialists, institutions of higher education and research institutes are members of ASQF and share the commitment to guarantee quality standards in ICT.



is a leading provider of certification examinations all over the world, headquartered in Germany with subsidiaries in London, Boston and Amsterdam.

Focusing on IT professions, iSQI plays a large role in certifying the know-how of professionals in over 90 countries on 6 continents in 10 languages. In 2015, iSQI examines more than 22.000 individuals.

Here's what you get:



365-Day
ASQF Membership
free of charge



Exclusive
members-only discounts
on tools, examination fees



Free access to over
100 events covering a
wide variety of topics



24/7 access to our
international expert
network



Marketing support
for your business



1 year
SQ Magazine
for free

Here's the deal:



info@asqf.de

Sent your message to info@asqf.de, containing keyword "startup".

Get your trial membership package and join in!

www.asqf.de



CONTACT

**Fraunhofer-Institut für
Offene Kommunikationssysteme
FOKUS**

Kaiserin-Augusta-Allee 31
10589 Berlin, Germany

info@fokus.fraunhofer.de

www.fokus.fraunhofer.de

Director

Prof. Dr. Ina Schieferdecker

Tel. +49 (30) 34 63 -7241

ina.schieferdecker@fokus.fraunhofer.de